

## PJS 21500 (50 Hz)



PRESSURE: 500 BAR (7250 PSI)  
FLOW RATE: 21 LPM (5.5 GPM)

# HIGH PRESSURE CLEANER

## OPEN CHALLENGE

**Not ONE Indian manufacturer can match the following BASIC USPs of PressureJet!!!**

1. We test each model for 500 hours of rigorous, continuous duty performance before it is introduced in the market. All our pumps undergo rigorous, continuous test at full test parameters for 500 hours, to ensure trouble free and a long life of our pumps in the field. PressureJet can produce proof of such tests, no other manufacturer can! More than 90% manufacturers do not have a test bench where they can take such test!!

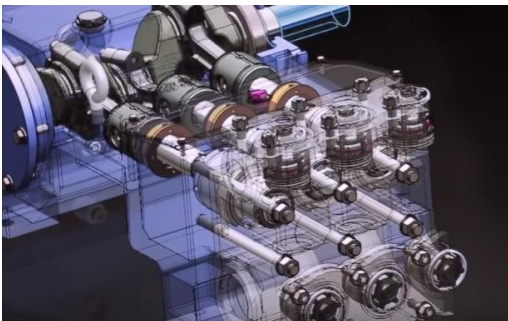


2. Thoroughly check each component of DIFFERENT pumps and accessories, using over 257 quality checking instruments including CMM. No other manufacturer can claim to have such variety of Quality checking instruments, which are essential to ensure technically correct products.

3. PressureJet implemented Oracle EBS 12.1.3. There are innumerable features which many other software do not have. One of the features is: 80% Purchase Orders for items that go in your pump are sent automatically. Less human intervention means faster processes, correct and timely purchases, and reduced employee cost. This is the reason why PressureJet is very competitive in spite of being No. 1 in Quality.



4. Incorporate "BLIND QUALITY CONTROL" feature that prohibits inspection team access to data on quality checks. Ensures 100% quality deliverance for client, reduces overall costs.



5. Use Work Stations with licensed 3-D Solid Work Software. Increases accuracy through better designs, reduces costs through increased productivity and guaranteed lab test design parameters, which saves unbelievable resource cost on the account of Trial and Error.





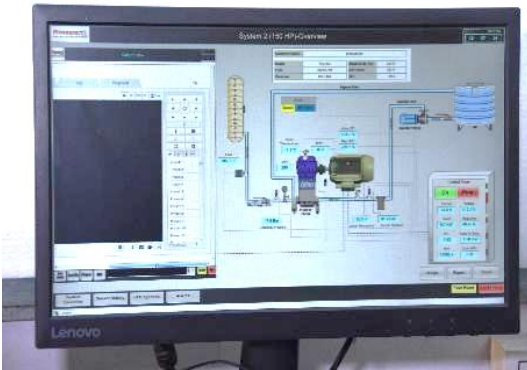
6. Assemble your pump in a totally dust-free environment to which ensures a long life of your pump. In case the assembled pump has tiny dust particles, you can't even imagine that how much it will cost you in the long run

7. PressureJet is probably the only Indian High PressureJet Pump manufacturer that carries a million-dollar inventory. For this reason, you don't need to worry about in-time delivery of spares when you exhaust your inventory!!!

8. Use state-of-the-art Atlas Copco make electric torque wrench to tighten all bolts in your pump. Ensures perfect fitting of all parts of your pump. This ensures long life of parts. This is one of the reasons, PressureJet is the only supplier which insists customer to opt for 24 hours continues duty test, before finalizing the order and committing your major investment. No other High PressureJet Pump manufacturer in the world uses this highly sophisticated, latest tool.



9. Provide online access to view the pump performance during Inspection. Enables you to view the actual performance of your pump through IP cameras in real-time.



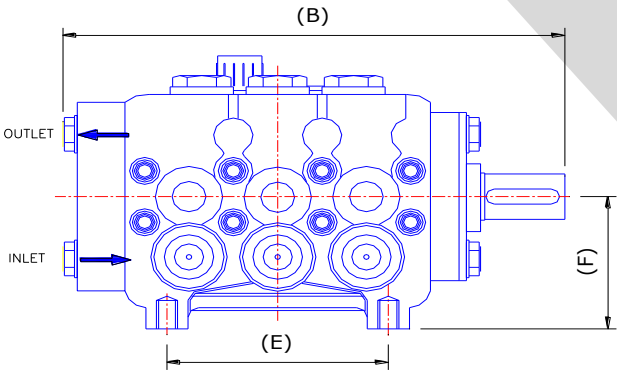
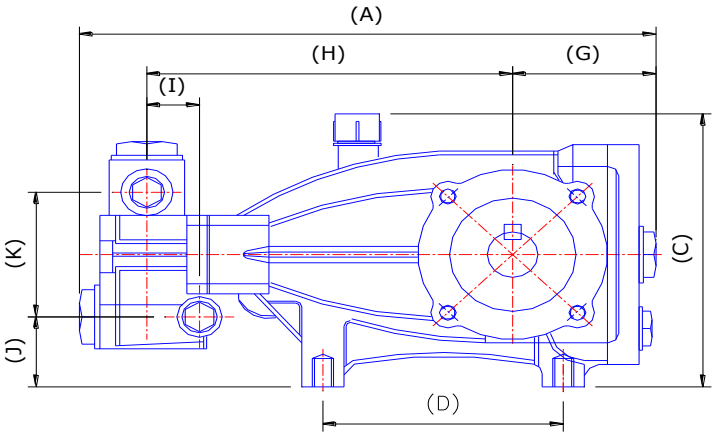
10. Lowest Price Guarantee: To a Genuine buyer, PressureJet guarantees that in case you find our prices higher than any other manufacturer, we shall offer you 1.25 times more discount than the price difference. For example, in case our price is Rs. 40,000/- and another manufacturer's price is Rs. 38,000/-, then we shall offer you a discount @ 1.25 times of the difference in value i.e. Rs. 2,500/. This guarantee is valid for 3 months even after the date of dispatch. Should you need, PressureJet shall be happy to submit this guarantee on a Judicial Stamp paper.

PJS 21500

Max. Rated Pressure	500 Bar (7250 psi)
Max. Rated Flow Rate @ 50Hz	12 LPM (5.5 gpm)
RPM @ 50 Hz	1450 RPM
Inlet Connection	3/8" BSPF
Inlet Pressure	1 to 2 Bar
Outlet Connection	3/8" BSPF
Working Fluid temp.	60 °C
Oil Grade	20W 40
Oil Capacity	1.2 Litre
Bare Pump Weight	19.2 Kg.
Bare Pump Dimension(mm)	353.5 (L) x 268(W) X 168.5 (H)

30 H.P.

500 Bar



Model	A	B	C	D	E	F	G	H	I	J	K
PJS 21500	303.5	263	168.5	145	105	82	81.5	244.5	12	40	82

Note : All Dimensions are in mm.

# MODEL SELECTION CHART

S.N.	Item Description	Qty (Nos)	Bronze	Silver	Gold	Platinum
1	PJS21500 Bare Pump	1	●	●	●	●
2	Electric Motor 30 Hp-1500 Rpm-3 Ph-415v-50Hz-Foot Mounted-Nin FLP-IE2 (Make:PressureJet)	1	●	●	●	●
3.1	Base Frame-180 with coupling and Coupling Guard	1	✓			
3.2	Motor Base PX-180 Trolley with Pin Bush Coupling and Guard	1		✓	✓	
3.3	Trolley and Plastic 225 ltr Tank with Pin Bush Coupling	1				✓
4	28.0320.65 F5 L Plastic Suction Strainer	1	●	●	●	●
5	Pressure Gauge Glycerin Filled 4"(100mm) SS Dial Bottom Connection-3/8" BSP-1000 BAR	1	●	●	●	●
6	High Pressure Needle Valve-3/8" BSP-500 Bar (SS 304)	1	●	●	●	●
7	S-10 Safety Valve	1	●	●	●	●
8	60.1470.00 VB53 Unloader Valve-80 l/min 500 bar	1	●	●	●	●
9	30.5400.00 RL84 Spray Trigger Gun-80 l/min. 500 bar	1	●	●	●	●
10	High Pressure Cleaning Nozzle Degree - 0 ,Size-04-1/4" NPT	1	●	●	●	●
11	High Pressure Cleaning Nozzle Degree - 5 ,Size-04-1/4" NPT	1	●	●	●	●
12	25.1750.40 UR50-Rotating Nozzle Size-04-1/4" BSP	1			✓	✓
13	Rigid Lance 1/2" Sch-80 X 1000mm (SS 304)	1	●	●	●	●
14	High Pressure Water Blast Rubber Hose 1/2"X 10 Meter-1000 BAR (Both Side SS Swivel Connection 1/2" BSPF)	1	●	●	●	●
15	Low Pressure Suction Hose 3/4" X 3 Meter (One Side MS Swivel Female Connection 3/4" BSPF)	1	●	●	●	●
16	Low Pressure By Pass Hose 1/2" X 1.5 Meter (One Side MS Swivel Female Connection 1/2" BSPF)	1	●	●	●	●
17	Electric Control Panel Star Delta-30Hp-415v-50Hz	1	●	●	●	●

18	10 Sq.Mm - 4 Core Pvc Insulated Copper Flexible Cable	10 m	●	●	●	●
19	Lance Adaptor 1/2 BSPF X 1/4 NPTF	1	●	●	●	●
TOTAL SYSTEM PRICE (INCL. OF ABOVE ITEMS)			Rs. 2,53,480	Rs. 2,62,000	Rs. 3,24,440	Rs. 3,27,450

Complete System as above with Diesel Engine-38 Hp/1500 Rpm, Self-Start (Make-Greaves) Instead of Electric Motor	1	Rs. 5,33,650	Rs. 5,42,150	Rs. 6,04,600	Rs. 6,07,600
Complete System as above with Electric Motor 30 Hp-1500 Rpm-3 Ph-415v-50Hz-Flame Proof-Foot Mounted-IE2 (Make:Crompton)	1	Rs. 3,10,850	Rs. 3,19,360	Rs. 3,81,810	Rs. 3,84,830

S.N.	Nozzle Options	Qty.	Unit Price (Rs.)	Total Price (Rs.)
1	25.1750.40 Ur50-Rotating Nozzle Size-04-1/4" BSPF-500 Bar	1	62,460	62,460
2	High Pressure Cleaning Nozzle Degree - 0 ,Size-04-1/4" NPT (1/4MEG0004) -Straight Jet	1	600	600
3	High Pressure Cleaning Nozzle Degree - 5 ,Size-04-1/4" NPT (1/4MEG0504) -V Jet	1	600	600

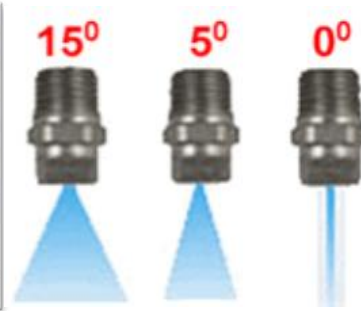
S.N.	Spares Parts List	Qty./ Pump	Unit Price (Rs.)	Total Price (Rs.)
Spare Parts for Pump PJS 21500				
1	260224 Plunger Seals 16 mm Kit (PX15,PX21)	1	3,440	3,440
2	260139 Complete Valve Kit (PX15,PX21)	3	8,160	24,480
3	260003 Plunger Oil Seal Kit (NLT,XLT,XXT,PX)	1	350	350
Spare Parts for Gun				
4	30.5414.24 Spares Kit for RL84 Gun	1	8,300	8,300
Spare Parts for Unloader Valve				
5	60.1452.24 Spare Kit for VB53 Unloader Valve	1	3,150	3,150

Note: 1. We also offers custom design pumps and systems, However price of custom design products are not comparable with standard models.

2. Above mentioned spares prices are applicable only when you place an order along with system.

## GENERAL INFORMATION

In High Pressure Cleaner System, role of different nozzles is very crucial. The goal is to increase the kinetic energy of the water at the expense of its pressure and internal energy. The nozzle is the restriction at the end of Gun that creates the pressure.



The turbo nozzle is a most unique solution to limitations of the 0° tip conventional nozzle. 0° tip creates the most impact pressure but that is so concentrated. Advantage of turbo nozzle is it spins 0° jet in a circle of 5° or 15° . It is commonly stated that turbo nozzle has double cleaning efficiency.

### Straight Jet Nozzle

- ✓ A straight jet nozzle has a orifice which creates a solid jet with 0° spray angle.
- ✓ Creates a jet possessing very high impact strength.
- ✓ Normally use wherein very hard and thick scales are to be removed.
- ✓ Should be use where the parent material is able to sustain high impact energy. Cannot be used for cleaning delicate items like glass, tiles, etc.

### Angular Jet Nozzle

- ✓ An angular jet nozzle has an orifice which develops jet spray at certain angle e.g. 5° or 15°, etc.
- ✓ Creates a jet having somewhat impact strength.
- ✓ Normally use to clean loose scales or for general washing only.
- ✓ Use while cleaning loose scales and normal dirt from delicate parts like welded joints, glass lining, etc.

## ROTATING/TURBO JET NOZZLES

Turbo-Jet nozzles have been one of the most important accessories developed. These efficient tools provide the power of a zero-degree pattern. The circular motion also adds extra agitation to cleaning tough jobs. They are designed to provide a 200% cleaning efficiency over a 15-degree flat fan nozzle. The precision ceramic orifice and matching seat, along with the high strength forged brass housing; provide a long life accessory with no gears, teeth, or bearings.



## CONVENTIONAL NOZZLES

### 0° Nozzle(Straight Jet)

These pressure washer nozzles produce a pencil point pattern. **There is no fan created so this is not the tip to use when cleaning coverage is desired.** The red tip does deliver the highest impact as it concentrates the pressure into the smallest area. Avoid damaging wood or other fragile surfaces.

This is an ideal tool for cleaning under the deck of a lawnmower, removing caked on mud from equipment, cleaning stains from concrete, masonry, steel and aluminum even removing the grass from cracks in the sidewalk.

### 5° V-Jet Nozzle

These pressure washer nozzles are referred to as chiseling tips. Held at a 45 degree angle you can use it like a scraper to remove peeling paint or any scale. It is also used for other tasks where breaking the bond is harder than average. Of your different pressure washer nozzles you will find yourself using this one the most often when the task is tough.

## CONTROL PANEL

A control panel is a flat, often vertical, area where control or monitoring instruments are displayed. In control panel there are many controls like on/off button, Safety Shut down switch, Voltage and Ampere readings.



**Electric Control Panel**

## HIGH PRESSURE RIGID LANCES

For Cleaning applications, a **high pressure rigid lance** provides easy and firm grip for the Operation. A nozzle is attached to the end of the lance.

Note: We also offer up to 1 ,1.5,2 meter long lances.



**По вопросам продаж и поддержки обращайтесь:**

Архангельск (8182)63-90-72  
Астана +7(7172)727-132  
Астрахань (8512)99-46-04  
Барнаул (3852)73-04-60  
Белгород (4722)40-23-64  
Брянск (4832)59-03-52  
Владивосток (423)249-28-31  
Волгоград (844)278-03-48  
Вологда (8172)26-41-59  
Воронеж (473)204-51-73  
Екатеринбург (343)384-55-89  
Иваново (4932)77-34-06  
Ижевск (3412)26-03-58  
Иркутск (395) 279-98-46

Казань (843)206-01-48  
Калининград (4012)72-03-81  
Калуга (4842)92-23-67  
Кемерово (3842)65-04-62  
Киров (8332)68-02-04  
Краснодар (861)203-40-90  
Красноярск (391)204-63-61  
Курск (4712)77-13-04  
Липецк (4742)52-20-81  
Магнитогорск (3519)55-03-13  
Москва (495)268-04-70  
Мурманск (8152)59-64-93  
Набережные Челны (8552)20-53-41  
Нижний Новгород (831)429-08-12

Новокузнецк (3843)20-46-81  
Новосибирск (383)227-86-73  
Омск (3812)21-46-40  
Орел (4862)44-53-42  
Оренбург (3532)37-68-04  
Пенза (8412)22-31-16  
Пермь (342)205-81-47  
Ростов-на-Дону (863)308-18-15  
Рязань (4912)46-61-64  
Самара (846)206-03-16  
Санкт-Петербург (812)309-46-40  
Саратов (845)249-38-78  
Севастополь (8692)22-31-93  
Симферополь (3652)67-13-56

Смоленск (4812)29-41-54  
Сочи (862)225-72-31  
Ставрополь (8652)20-65-13  
Сургут (3462)77-98-35  
Тверь (4822)63-31-35  
Томск (3822)98-41-53  
Тула (4872)74-02-29  
Тюмень (3452)66-21-18  
Ульяновск (8422)24-23-59  
Уфа (347)229-48-12  
Хабаровск (4212)92-98-04  
Челябинск (351)202-03-61  
Череповец (8202)49-02-64  
Ярославль (4852)69-52-93

Киргизия (996)312-96-26-47

Казахстан (772)734-952-31

Таджикистан (992)427-82-92-69

Эл. почта [pgt@nt-rt.ru](mailto:pgt@nt-rt.ru) || Сайт: <https://pressurejet.nt-rt.ru/>



**PressureJet**