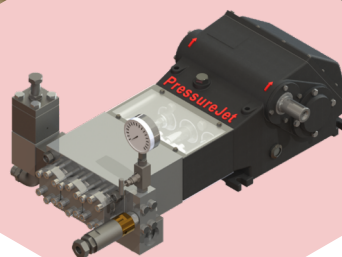
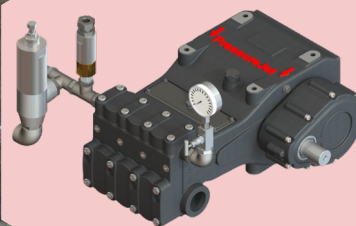
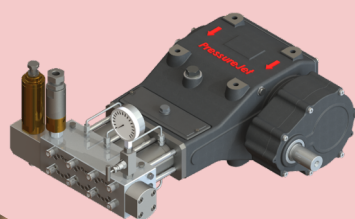


# MARKET LEADER IN THE SEWER JETTING PUMPS

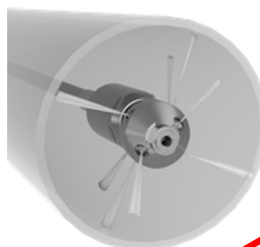


USE THE MOST DEPENDABLE AND  
ECONOMICAL SEWER JETTING PUMP  
AND SAY NO TO MANUAL  
SCAVENGING.

**PA  
Series**

**MADE  
IN  
INDIA**

**WIDEST PRODUCT  
RANGE IN THE MARKET**



**FLOW RATE**  
MIN. **80 LPM** TO  
MAX. **150 LPM**



Архангельск (8182)63-90-72  
Астана (7172)727-132  
Астрахань (8512)99-46-04  
Барнаул (3852)73-04-60  
Белгород (4722)40-23-64  
Брянск (4832)59-03-52  
Владивосток (423)249-28-31  
Волгоград (844)278-03-48  
Вологда (8172)26-41-59  
Воронеж (473)204-51-73  
Екатеринбург (343)384-55-89  
Иваново (4932)77-34-06

Ижевск (3412)26-03-58  
Иркутск (395)279-98-46  
Казань (843)206-01-48  
Калининград (4012)72-03-81  
Калуга (4842)92-23-67  
Кемерово (3842)65-04-62  
Киров (8332)68-02-04  
Краснодар (861)203-40-90  
Красноярск (391)204-63-61  
Курск (4712)77-13-04  
Липецк (4742)52-20-81  
Киргизия (996)312-96-26-47

Магнитогорск (3519)55-03-13  
Москва (495)268-04-70  
Мурманск (8152)59-64-93  
Набережные Челны (8552)20-53-41  
Нижний Новгород (831)429-08-12  
Новокузнецк (3843)20-46-81  
Новосибирск (383)227-86-73  
Омск (3812)21-46-40  
Орел (4862)44-53-42  
Оренбург (3532)37-68-04  
Пенза (8412)22-31-16  
Россия (495)268-04-70

Пермь (342)205-81-47  
Ростов-на-Дону (863)308-48-15  
Рязань (4912)46-61-64  
Самара (846)206-03-16  
Санкт-Петербург (812)309-46-40  
Саратов (845)249-38-78  
Севастополь (8692)22-31-93  
Симферополь (3652)67-13-56  
Смоленск (4812)29-41-54  
Сочи (862)225-72-31  
Ставрополь (8652)20-65-13  
Казахстан (772)734-952-31

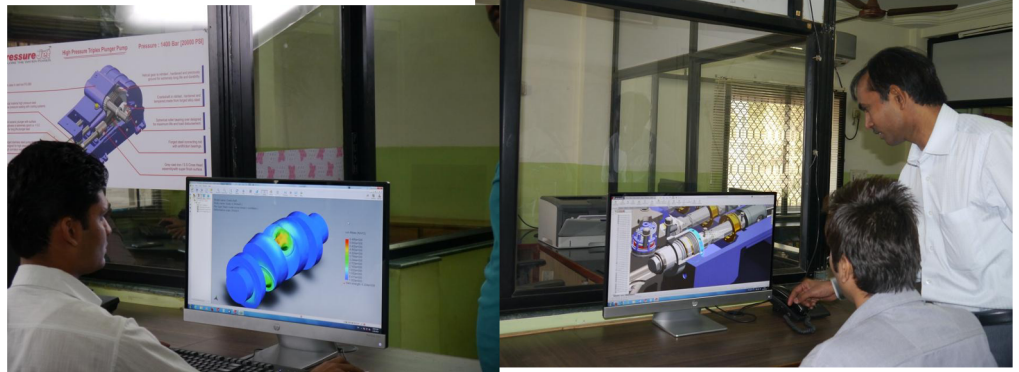
Сургут (3462)77-98-35  
Тверь (4822)63-31-35  
Томск (3822)98-41-53  
Тула (4872)74-02-29  
Тюмень (3452)66-21-18  
Ульяновск (8422)24-23-59  
Уфа (347)229-48-12  
Хабаровск (4212)92-98-04  
Челябинск (351)202-03-61  
Череповец (8202)49-02-64  
Ярославль (4852)69-52-93

<https://pressurejet.nt-rt.ru/> || [pgt@nt-rt.ru](mailto:pgt@nt-rt.ru)

# ABOUT PRESSUREJET

PressureJet Systems Pvt. Ltd. was established in 1996 in Ahmedabad, India. PressureJet (An ISO 9001:2015 certified company) is a leading manufacturer of high pressure triplex plunger pumps and relevant accessories. These pumps are most suitable for Sewer jetting applications. Today, PressureJet has a work force of more than 100 dedicated people. We have 70,000 Sq. ft. area in Asia's premier industrial estate in Ahmedabad. Out of which, 38,000 Sq. ft. area has been allocated for manufacturing activities.

## DESIGN & DEVELOPMENT



PressureJet has an in-house Design & Development Department that continues strives to design pragmatic and cost-effective solution that fulfil customer's needs. It is equipped with six separate workstation with licensed modelling tools like SolidWorks 3-D software and has machine design analysis capabilities.

The Design and Development department of PressureJet is highly passionate about innovation and creating cutting edge products for clients. We have a team of highly qualified and passionate individuals who are always ready and eager to resolve any customer issues. This, along with our state-of-the-art infrastructure makes for one of the most advanced and dedicated Product Development department in the industry.

## BARE PUMP ASSEMBLY

We don't simply talk about engineering, we put it in action, and this reflects in every aspect of our business. High pressure pumps are similar to engines in a lot of ways and should ideally have a dust free assembly shop, like the one at PressureJet. Ours is the only engineering company, after Toyota and Ford Motors, to use the highly sophisticated and very accurate Atlas Copco CNC Torque Wrench to assemble the pumps. In addition, we have developed in house some very special and highly accurate fixtures that ensure highly accurate assembly of pumps.





# PRODUCTION FACILITY



The high-pressure pump manufacturing process requires manufacturing extremely high-quality components, at comparatively low volume.

Further, the high-pressure pump mechanism is similar to an engine and has a crank-shaft, connecting road, crank-case etc... And it converts rotary motion into reciprocating motion similar to an automobile engine. This necessitates use of components that have very high dimensional accuracy/smooth surface finish.

Today, PressureJet has world-class, state-of-the-art, highly accurate and extremely Rugged branded machinery that ensure consistent manufacturing of very high precision critical components of high pressure pumps, which are at par with international quality. But then again, unlike most of other manufacturers, we don't want you to take us at face value. Adjectives can barely scratch the surface of what we do here at PressureJet. We are engineers, and we deal in facts and figures.

## QUALITY CONTROL



PressureJet is equipped with the most advanced quality checking equipment among all high pressure plunger pump manufacturers in India. This enables the company's quality to stand head and shoulders above competitors. PressureJet believes in maintaining international Quality standards for its products.

To the end, the company has invested over INR 10 million in establishing its Quality Checking department and checks all critical precision engineering components of the pumps in a controlled environment. It currently uses 257 sophisticated and different quality checking instruments across the entire manufacturing process-right from procurement of raw materials to final inspection and testing of pumps before dispatch.

PressureJet is the only High Pressure-Pump manufacturing company in India that has the highest number of quality checking instruments that are procured, maintained and regularly used to ensure.

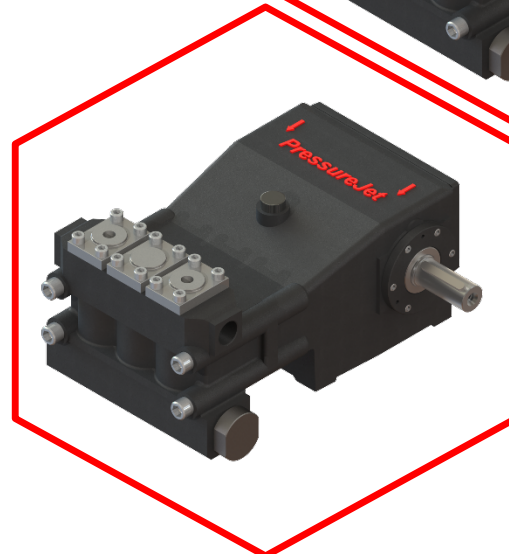
# SALIENT FEATURES

- Pump head is specifically made from Stainless Steel for better life.
- Manufactured using state of the art production facilities.
- Designed to perform under heavy duty application & able to provide intermediate duty performance options.
- Better weight optimization
- Self-splash lubrication system
- Build for ease of maintenance
- Power input mounting can be equipped both side of the pump.
- Features arrangement for input shaft location at several degrees for enhanced mounting flexibilities.
- Available direct couple @ 1000 RPM or pulley – belt drive @ 1500 RPM.
- Integrated cooling system for unmatched performance under long working hours.
- Fully tested against severe odds to match the customer requirements all over the globe.

## PUMP

### SPECIFICATION

- Plunger Stroke : 40 mm
- Maximum Plunger Speed : 1.26 m/sec. @950spm
- Plunger Force : 12.45 KN
- Liquid End Material : **Stainless Steel**
- Required Inlet Pressure : 2 to 3 Bar
- Inlet Connection : 1 ½" BSPF
- Outlet Connection : 1" BSPF
- Max. inlet water temp : 5 to 60 °C
- Oil Capacity : 4 Liter
- Oil Grade :- **Gear Oil 220**





# MODEL

## SELECTION CHART

PUMP SERIES	MODEL	PUMP SPEED	FLOW RATE IN LPM	PRESSURE IN BAR (ENGINE H.P.)
-------------	-------	------------	------------------	-------------------------------

PA

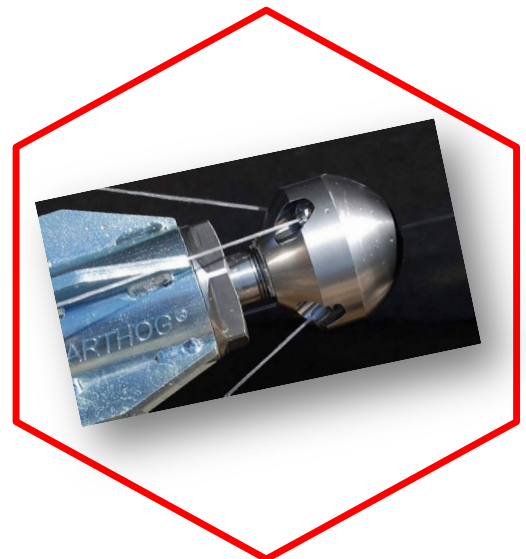
PA 30	950	80	175 (45)	155 (40)	115 (30)
PA 32		91	150 (44)	125 (37)	115 (30)
PA 36	800	115	120 (45)	90 (29)	-
PA 45		150	100 (50)	75 (36)	-



## SEWER JETTING

### APPLICATION

- Cleaning large **sewage line**.
  - Removing giant **clogged** in the drainage line.
  - Maintaining the drainage system & gutter lines.
  - For removing the **deposited scale** in the drainage.
  - For providing a **clean & hygienic** maintenance
- Efficient & Effective**



# CROSS SECTIONAL VIEW

## PISTON/CROSS HEAD

Grey Iron & Stainless Steel: Alloy casting piston & stainless steel piston rod are hardened & super finish surface.

## PLUNGER SEAL

PTFE Aramide / GFO Aramide rope: Aramide fibre yarn packing with PTFE fibre face or carbonaceous aramide yarn packing with GFO fibre face for high compressive & tensile strength ensure effective sealing.

## COMPLETE VALVE INTERNAL (VALVE ASSEMBLY)

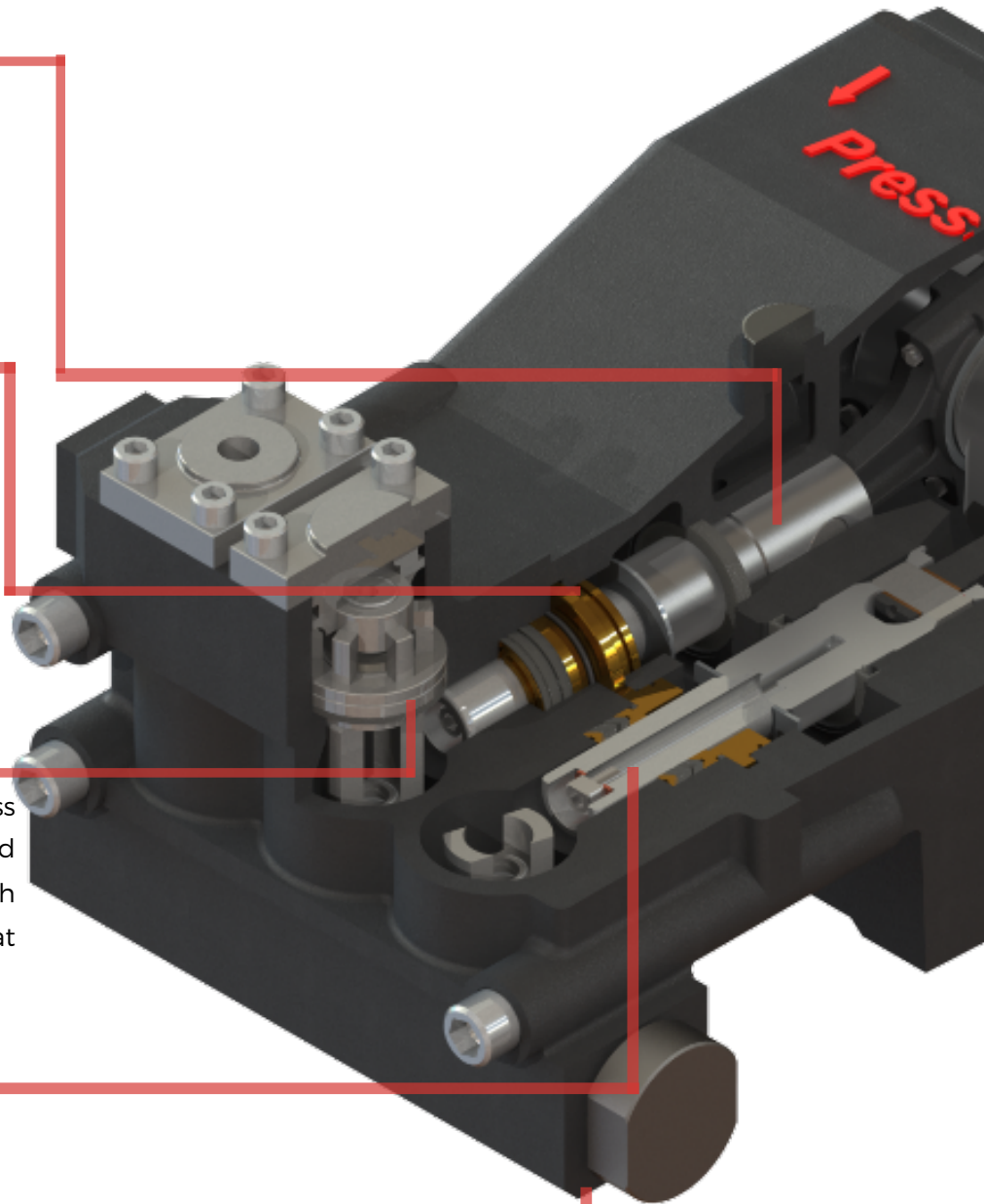
Stainless Steel: Valves made of stainless steel for hardened & anti corrosion hard surface coated for long life. High volumetric efficiency valves operate at 95% plus efficiency.

## PLUNGER

Primarily composed of Tungsten coated. Surface roughness is extremely good i.e. <0.2 Ra.

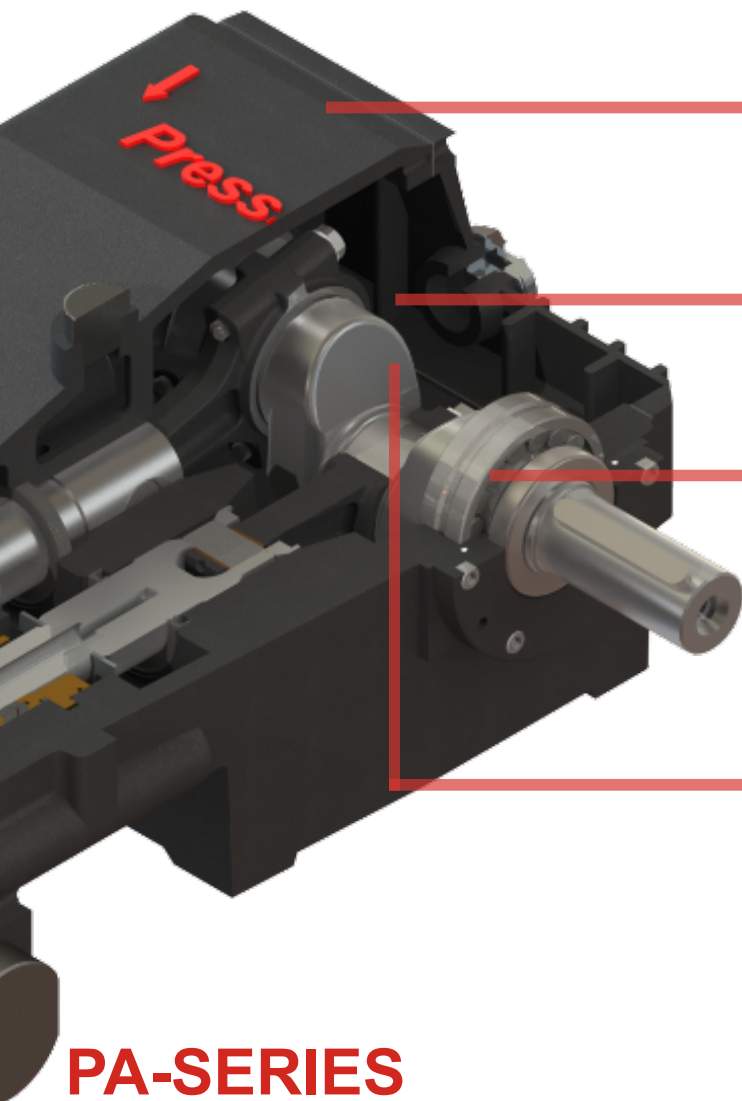
## PUMP HEAD

Stainless steel liquid end is made of high corrosion resistant. And casting CF8 for pump model PA.





# CROSS SECTIONAL VIEW



## CRANK CASE (MAIN BODY)

Grey Iron: Main body in grey iron casting FG-260 with Honned surface finish bore.

## CONNECTING ROD

Alloy Steel: Helical gear is nitride hardened and precision ground for extremely long life & durability.

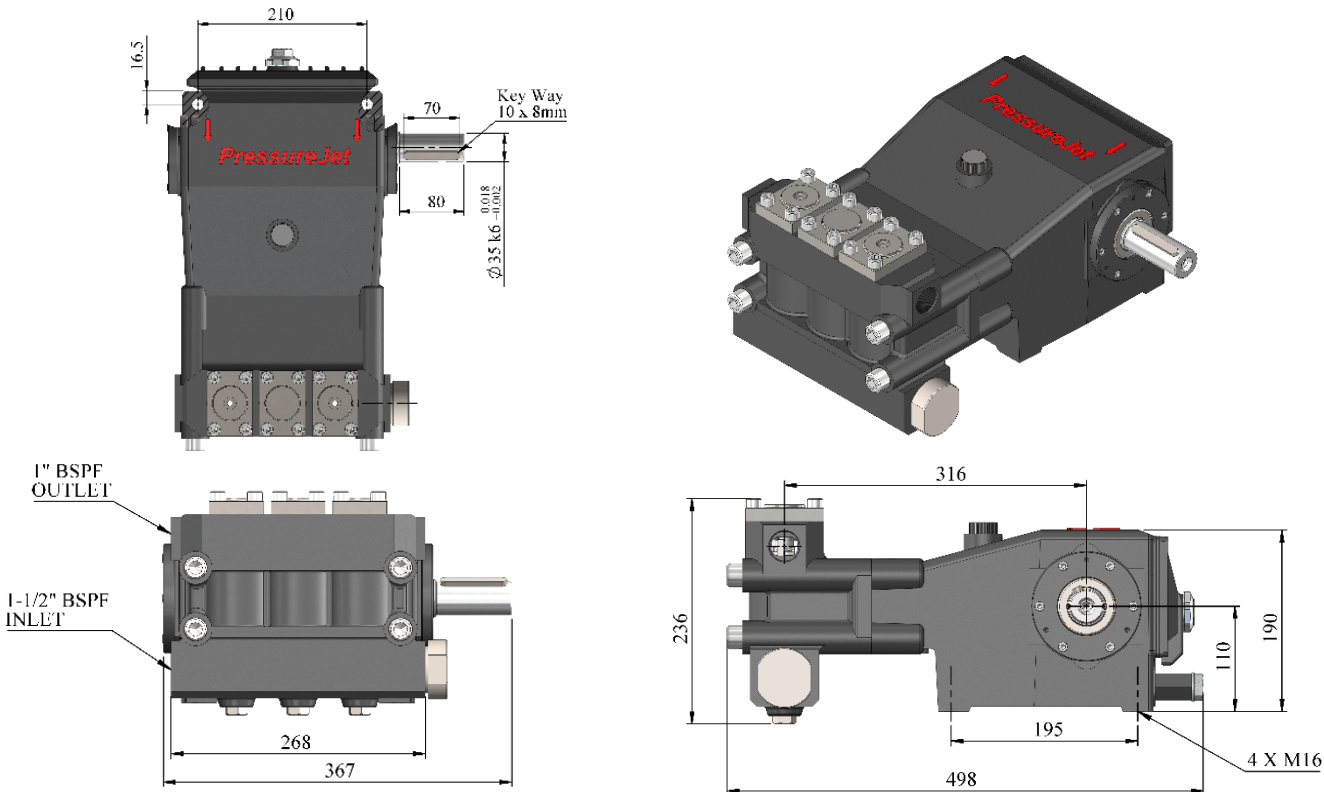
## BEARING

Oversized for maximum life and load disbursement. Self-alignment roller bearing enable it to handle 26% more load than other pumps.

## CRANKSHAFT

Alloy Steel: Crankshaft is made of nitrated, hardened and precision ground for extremely long life and durability.

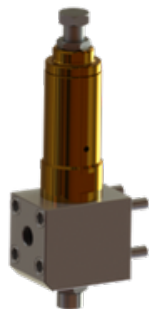
# PA-SERIES GENERAL ARRANGEMENT DRAWING



NOTE: All dimensions are in mm..

# ACCESSORIES

## PRESSURE REGULATING VALVE



REGULATE OUTPUT PRESSURE AS REQUIRED  
BYPASS EXCESS WATER

## SCREEN FILTERS



SCREEN FILTERS USED FOR FILTER WATER

## WG & WD CLASSIC NOZZLE



CONNECTION:- 1" OR 1-1/4" NPT / BSPP  
INLET

FLOW RATE:- 303-454 LPM

PRESSURE:- 83-345 BAR

## WGR MAGNUM



CONNECTION:- 1" OR 1-1/4" NPT OR  
BSPP

PRESSURE:- 83-345 BAR

FLOW RATE:- 189-303 LPM

EXTENDED LIFE, REDUCED DOWNTIME

## WH CLASSIC NOZZLE



CONNECTION:- 1/2" OR 3/4" NPT OR BSPP  
INLET

FLOW RATE:- 38-189 LPM

PRESSURE:- 83-552 BAR

DESCALING HEAD AVAILABLE

## WS CLASSIC NOZZLE



CONNECTION:- 1/2" NPT / BSPP INLET

FLOW RATE:- 30-76 LPM

PRESSURE:- 83-345 BAR

WHIP HOSE, JOINTED INLET AND DIRECT CONNECTION  
AVAILABLE



## IMPORTANT NOTE:

OWING TO CONTINUOUS R & D, ANY TECHNICAL DETAILS & SPECIFICATIONS MENTIONED IN THIS CATALOG ARE LIABLE TO CHANGE ANYTIME. ALL RIGHTS RESERVED TO PRESSUREJET. FOR LATEST INFORMATION & MORE DETAILS, PLEASE VISIT OUR WEBSITE.

OUR WEBSITE IS FULLY INFORMATIVE, EXHAUSTIVE, AND COMMUNICATIVE. IT IS DESIGNED TO PROVIDE MAXIMUM INFORMATION IN THE MOST PRECISE FORM TO HELP OUR VALUED CUSTOMERS TO TAKE A QUICK AND RIGHT DECISION.

Архангельск (8182)63-90-72  
Астана (7172)727-132  
Астрахань (8512)99-46-04  
Барнаул (3852)73-04-60  
Белгород (4722)40-23-64  
Брянск (4832)59-03-52  
Владивосток (423)249-28-31  
Волгоград (844)278-03-48  
Вологда (8172)26-41-59  
Воронеж (473)204-51-73  
Екатеринбург (343)384-55-89  
Иваново (4932)77-34-06

Ижевск (3412)26-03-58  
Иркутск (395)279-98-46  
Казань (843)206-01-48  
Калининград (4012)72-03-81  
Калуга (4842)92-23-67  
Кемерово (3842)65-04-62  
Киров (8332)68-02-04  
Краснодар (861)203-40-90  
Красноярск (391)204-63-61  
Курск (4712)77-13-04  
Липецк (4742)52-20-81

Киргизия (996)312-96-26-47

Магнитогорск (3519)55-03-13  
Москва (495)268-04-70  
Мурманск (8152)59-64-93  
Набережные Челны (8552)20-53-41  
Нижний Новгород (831)429-08-12  
Новокузнецк (3843)20-46-81  
Новосибирск (383)227-86-73  
Омск (3812)21-46-40  
Орел (4862)44-53-42  
Оренбург (3532)37-68-04  
Пенза (8412)22-31-16

Россия (495)268-04-70

Пермь (342)205-81-47  
Ростов-на-Дону (863)308-18-15  
Рязань (4912)46-61-64  
Самара (846)206-03-16  
Санкт-Петербург (812)309-46-40  
Саратов (845)249-38-78  
Севастополь (8692)22-31-93  
Симферополь (3652)67-13-56  
Смоленск (4812)29-41-54  
Сочи (862)225-72-31  
Ставрополь (8652)20-65-13

Казахстан (772)734-952-31

Сургут (3462)77-98-35  
Тверь (4822)63-31-35  
Томск (3822)98-41-53  
Тула (4872)74-02-29  
Тюмень (3452)66-21-18  
Ульяновск (8422)24-23-59  
Уфа (347)229-48-12  
Хабаровск (4212)92-98-04  
Челябинск (351)202-03-61  
Череповец (8202)49-02-64  
Ярославль (4852)69-52-93

<https://pressurejet.nt-rt.ru/> || [pgt@nt-rt.ru](mailto:pgt@nt-rt.ru)